



Understanding Appropriate Use Criteria for CY 2022

Ordering Professionals

February 2022



Current CMS Requirements & Definitions

WHEN?

- “Educational and operations testing period” continues through at least December 31, 2022
- Participation is encouraged; **no** claims will be denied for missing or inaccurate AUC information during the testing period

WHAT?

- Qualified CDS mechanism (QCDSM) consulted
- AUC adherence score
- NPI of ordering clinician

HOW?

- G-code for QCDSM consulted
- Modifiers indicate whether the order:
 - Adhered
 - Did not adhere
 - Was not applicable to AUC
 - Is eligible for an exception

Current CMS Requirements & Definitions

APPLICABLE IMAGING SERVICES?

- MRI
- CT
- NM
- PET

APPLICABLE SETTINGS?

- Physician offices/imaging centers
- Hospital outpatient departments (including ED)
- Ambulatory surgical centers
- Independent diagnostic testing facilities

APPLICABLE PAYMENT SYSTEMS?

- Medicare Physician Fee Schedule
- Hospital Outpatient Prospective Payment System
- ASC payment system

AUC?

- Evidence-based guidelines for imaging appropriateness

Current CMS Requirements & Definitions

EXCEPTIONS?

- Inpatient (Medicare Part A)
- Life-threatening conditions
- Hardships (lack of Internet, EHR failure, disasters, COVID-19)

EXCLUSIONS?

- Critical Access Hospitals (CAHs)
- Claims for the TC or PC if both are not provided in a PAMA-setting or under a PAMA-payment system
- Maryland hospital outpatients
- Inpatients → Outpatients
- Medicare as a Secondary Payor (MSP)
- ADIS ordered before AUC effective date, but performed afterwards

New Modifier
(TBD)

Current CMS Requirements & Definitions

FURNISHING PROFESSIONAL?

- Us (radiologist, imaging center, radiology department)

ORDERING PROFESSIONAL?

- You (physician or non-physician)

QUALIFIED CLINICAL SUPPORT

MECHANISM?

- CMS-approved electronic tool for using AUC
- Scores based on appropriateness

G-CODES?

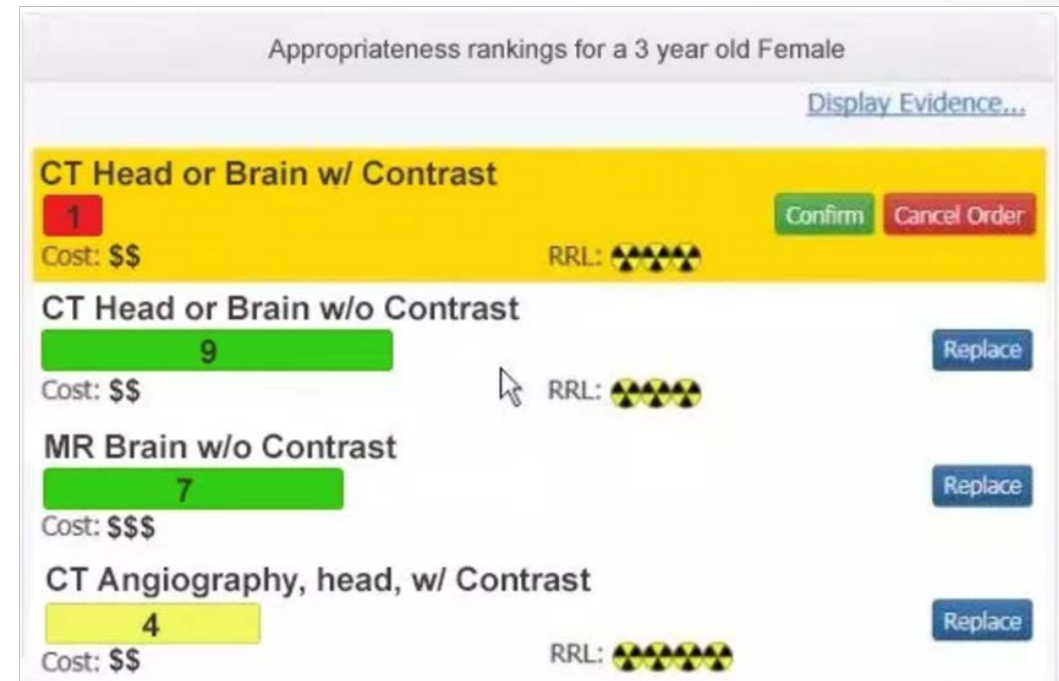
- CMS code for “Temporary Procedures & Professional Services”

MODIFIERS?

- Two-digit at end of code

APPROPRIATENESS SCORE?

- Higher the score, the more appropriate the test
- Colors indicate appropriateness



CMS QCDSMs and G-Codes

Mechanism Name	Code	Mechanism Name	Code
eviCore healthcare's Clinical Decision Support Mechanism	G1001	InveniQA's Semantic Answers in Medicine™	G1014
MedCurrent OrderWise™	G1002	Reliant Medical Group CDSM	G1015
Medicalis Clinical Decision Support Mechanism	G1003	Speed of Care CDSM	G1016
<i>National Decision Support Company CareSelect™*</i>	<i>G1004</i>	HealthHelp's Clinical Decision Support Mechanism	G1017
<i>AIM Specialty Health ProviderPortal®*</i>	<i>G1007</i>	INFINX CDSM	G1018
Cranberry Peak ezCDS	G1008	LogicNets AUC Solution	G1019
Stanson Health's Stanson CDS	G1010	Curbside Clinical Augmented Workflow	G1020
<i>RadRite*</i>	<i>G1011</i>	E*HealthLine Clinical Decision Support Mechanism	G1021
AgileMD's Clinical Decision Support Mechanism	G1012	Intermountain Clinical Decision Support Mechanism	G1022
EvidenceCare's ImagingCare	G1013	Persivia Clinical Support Mechanism	G1023

Offers free web-based CDS tool

Source: <https://www.cms.gov/Medicare/Quality-Initiatives-Patient-Assessment-Instruments/Appropriate-Use-Criteria-Program/CDSM> (accessed January 17, 2022)

CMS AUC Modifiers

Type	Modifier	Description
Emergency Medical Condition	MA	Ordering professional is not required to consult a clinical decision support mechanism due to service being rendered to a patient with a suspected or confirmed emergency medical condition
Hardship Exception	MB	Ordering professional is not required to consult a clinical decision support mechanism due to the significant hardship exception of insufficient internet access
Hardship Exception	MC	Ordering professional is not required to consult a clinical decision support mechanism due to the significant hardship exception of electronic health record or clinical decision support mechanism vendor issues
Hardship Exception	MD	Ordering professional is not required to consult a clinical decision support mechanism due to the significant hardship exception of extreme and uncontrollable circumstances
AUC Adherence	ME	The order for this service adheres to the appropriate use criteria in the clinical decision support mechanism consulted by the ordering professional
AUC Adherence	MF	The order for this service does not adhere to the appropriate use criteria in the qualified clinical decision support mechanism consulted by the ordering professional
AUC Adherence	MG	The order for this service does not have appropriate use criteria in the clinical decision support mechanism consulted by the ordering professional
Missing AUC Consultation Information	MH	Unknown if ordering professional consulted a clinical decision support mechanism for this service, related information was not provided to the furnishing professional or provider
	QQ	Ordering professional consulted a qualified clinical decision support mechanism for this service and the related data was provided to the furnishing professional (effective date: 7/1/18)

Source: CMS MLN Matters 11268 dated July 26, 2019



Accessing a QCDSM

1. CMS approved QCDSMs
2. Free web application (e.g., CareSelect, AIM Specialty Health, RadRite)
3. CDS integrated into EHR
4. RadNet's Provider Portal (*coming later in 2022*)
 - Exams can be ordered
 - Accepts/stores entered AUC information
 - Infix QCDSM integrated

Performing AUC Consultation

Systems may vary

- Step 1: Enter required information
 - Patient age
 - Patient sex
 - Procedure/service ordered
 - Clinical indication(s)/reason(s) for exam
- Step 2: Appropriateness determination (e.g., score, adhere/not adhere)
 - Procedure/service ordered
 - Alternatives
- Step 3: Select procedure
- Step 4: AUC confirmation with consultation information
- Step 5: AUC confirmation delivery means
- Step 6: Forward consultation information (G-code + modifier) to RadNet with order

Performing AUC Consultation

Infinx QCDSM: Integrated in Provider Portal Ordering



Compliance Certificate

CDSM Certificate #1

CDSM Consulted	INFX (G1018)
Date of Consultation	02/22/2022 10:18:00 AM
Physician Name	TESTDOC TESTDOC
Physician NPI	0000000000
Transaction ID	0000000796
Procedure	72141
Reason for Exam	R07.2
Q-PLE Consulted	RAYUS Quality Institute
Adhere to AUC	Does Not Adhere - MF
Unique Consultation Identifier	INFX00000000796021

Print Certificate

Download Certificate

Finish



What You Need To Do

RadNet can accommodate AUC consultation information in multiple ways:



Fax

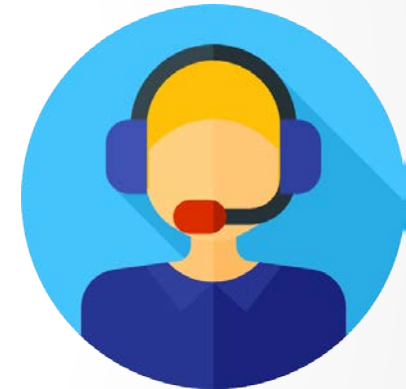


EHR



**Provider
Portal**

(Coming later in 2022)



Phone

AUC Resources

- CMS: <https://www.cms.gov/Medicare/Quality-Initiatives-Patient-Assessment-Instruments/Appropriate-Use-Criteria-Program/OandE>
- Professional Societies
- RadNet
 - www.RadNet.com/AUC
 - AskAboutAUC@RadNet.com
 - Educational materials
 - “What to Know”
 - “FAQs”



• “FAQs”



Key Takeaways:

- “Educational and operations testing period” continues through at least December 31, 2022
- Participation is encouraged; no claims will be denied for missing or inaccurate AUC information
- G-codes + modifiers report required AUC consultation
- Easy; instantaneous feedback
- Better patient care; no loss of autonomy compared to traditional prior-authorization methods



Understanding Appropriate Use Criteria for CY 2022

Thank you!