



Imaging is the Gateway to Population Health

Timothy M. Merchant,

*National Director of Screening Networks and Population Health Strategy
RadNet*

**“Imaging
is the
Gateway to
Population
Health.”**





Breast Screening

- **1/8** women
- **310,720** new cases
- **42,780** deaths
- Incidence rising

Lung Screening

New HEDIS Measure

- Men: **1/16** Women: **1/17**
- **234,580** new cases of lung cancer
- **125,070** deaths
- Incidence Declining/Mortality Rising

Prostate Screening

- **1/8** Men
- **299,010** new cases
- **35,250** deaths
- Incidence rising



PARTNERING FOR PROGRESS.

Statistics Courtesy of the American Cancer Society



Alzheimer's / Dementia

- **7 million** Americans are currently living with Alzheimer's disease
- Projected to rise to nearly **13 million by 2050**

Fatty Liver

- **80 to 100 million** Americans are currently living with Fatty Liver Disease
- Over **51,000** Americans die each year from Liver Disease

Cardiac

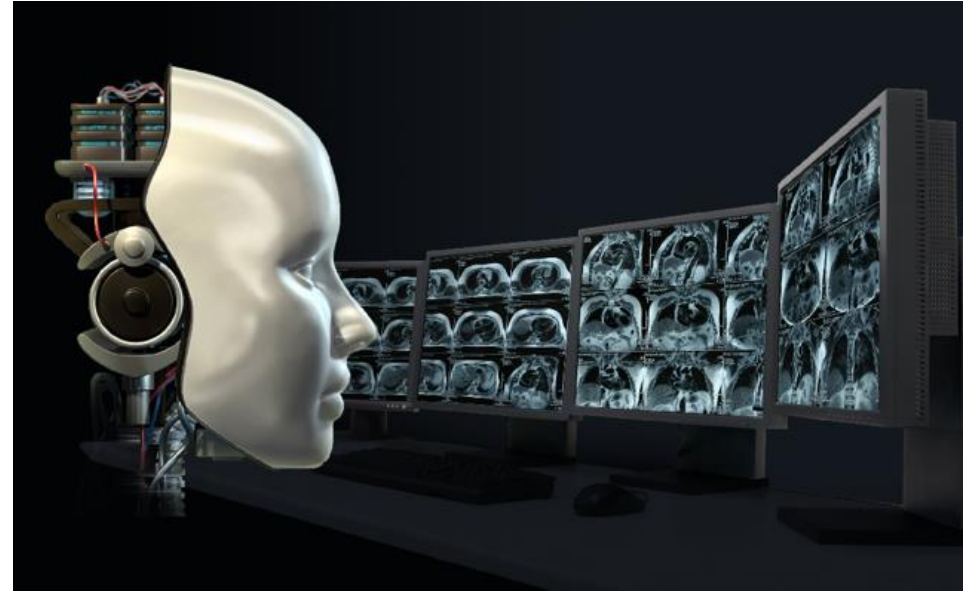
- **702,880 people** die from heart disease
- Incidence of heart disease is on the rise





Imaging will help:

- Detect Cancer and Disease Earlier
- Determine appropriate medications or treatments
- “Bundle” Preventive Screenings
- Develop New & Innovative Screenings



AI will help:

- Patient Positioning
- Earlier Detection of Disease
- Workflow Management
- Automation of Routine Tasks
- Assess Risk



Establishing Breast Screening in a Retail Setting



Hanford, CA

MammogramNow

MammogramNow

Milford, DE

MammogramNow

Phoenix, AZ



PARTNERING FOR PROGRESS.

The Future of Population Health:

- Get screenings closer to the people that need them
- New treatments require imaging
- Fusion of Blood/DNA/Genomics and Imaging
- AI will help with accuracy, automation of routine tasks, i.e. coaching new techs, automating reports
- The Tech Profession is a critical field supporting population health
- Investments in the technologist community are critical





Thank You!

PARTNERING FOR PROGRESS.